

**WORKERS' COMPENSATION APPEAL TRIBUNAL (WCAT)
QUARTERLY REPORT TO THE COMMUNITY
FOR THE PERIOD ENDED SEPTEMBER 30, 2013**

WCAT's mandate is to decide appeals brought by workers and employers from decisions of the Workers' Compensation Board, operating as WorkSafeBC (the Board). WCAT decides compensation, assessment, and prevention appeals from decisions of the Review Division of the Board. We also decide direct appeals from Board decisions regarding discriminatory action complaints, and compensation claim reopenings by application, as well as applications for certificates to the Court.

As of September 30, 2013, our total active inventory was 3,971 appeals. The vast majority of appeals are compensation appeals.

During the third quarter of 2013, we made decisions on the merits of 846 appeals and made summary decisions on a further 290 appeals that were rejected, dismissed, withdrawn, or suspended. An appeal may raise numerous issues and WCAT may allow, allow in part, or deny the appeal on each issue. During the quarter, we decided 1,241 issues.

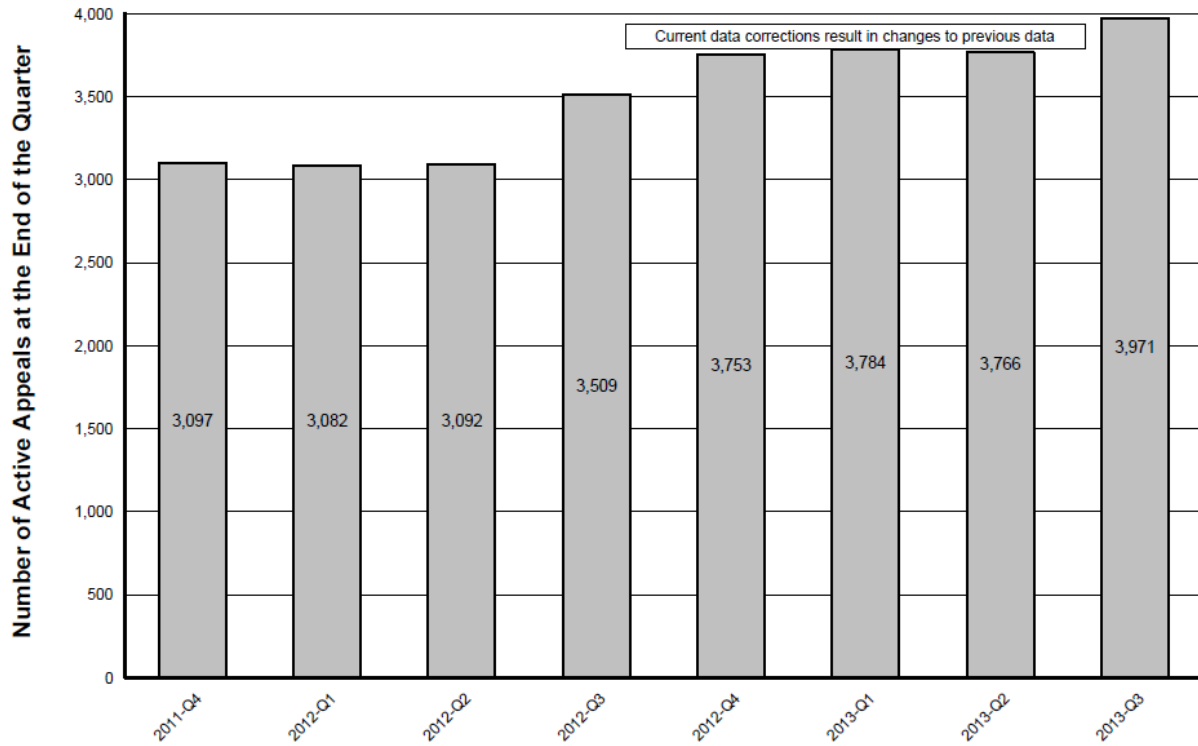
When WCAT makes a decision on the merits of an appeal, the decision under appeal may be varied, confirmed, or cancelled by WCAT. "Vary" means that WCAT varied the previous decision in whole or in part. Accordingly, whether WCAT has fully granted the remedies requested by the appellant on all issues arising under the appeal or merely changed a minor aspect of the previous decision, the decision is considered to have been "varied". "Confirm" means that WCAT agreed with all aspects of the previous decision. "Cancel" means that WCAT set aside the previous decision without a new or changed decision being provided in its place.

During the quarter, WCAT confirmed 52.5% of the decisions under appeal and varied 47.5% WCAT did not cancel any decisions. In deciding the issues rising out of those appeals, WCAT allowed the appeals on 33.5% of the issues, allowed them in part on 7% and denied them on 59.5%.

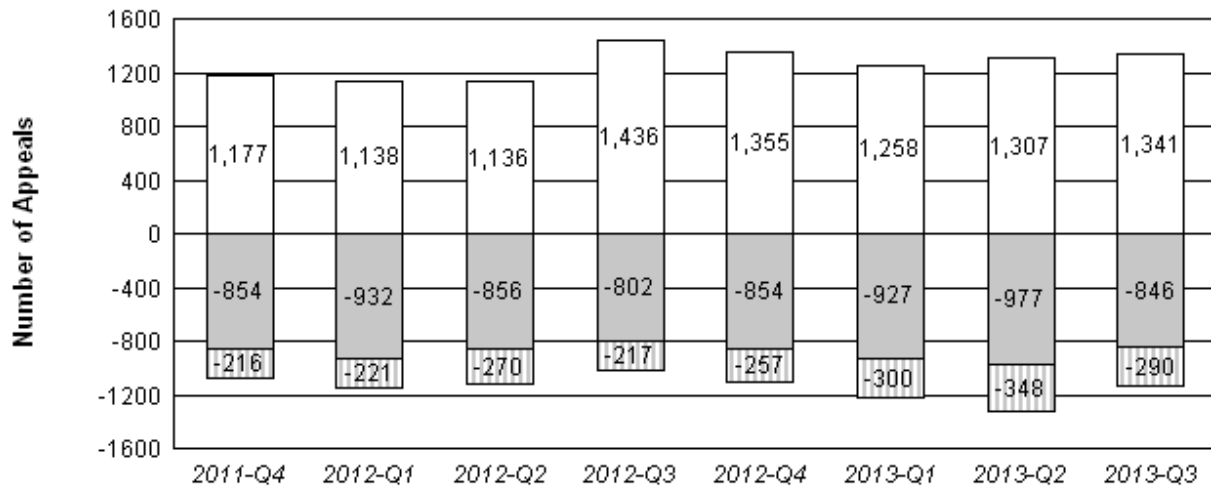
Attached are graphs and tables that contain further statistical information.

Caroline Berkey, Chair

**Workers' Compensation Appeal Tribunal
Number of Active Appeals In Inventory**



INTAKE and OUTPUT



Summary
 Merit
 Initiated

1. OUTCOMES of MERIT DECISIONS:

Outcome	2013-Q3	Last 12 Months
Confirm	52.5%	52.6%
Vary	47.5%	47.4%
Cancelled	0.0%	0.0%
Total	100.0%	100.0%

2. OUTCOMES of ISSUES:

Outcome	2013-Q3	Last 12 Months
Denied	59.5%	59.3%
Allowed	33.4%	32.6%
Allowed in Part	7.1%	8.1%
Total	100.0%	100.0%

3. REASONS for ISSUE OUTCOMES:

Outcome	2013-Q3	Last 12 Months
Denied	59.5%	59.3%
Error in Law	0.6%	0.6%
Error in Policy	0.7%	0.6%
Reweigh Existing Evidence	5.5%	5.7%
Reweigh with New Evidence	33.7%	33.8%
Total	100.0%	100.0%